

World's No.1 Air Treatment Brand



Source: Euromonitor International (Shanghai) Limited;
Consumer Appliances 24ed, retail volume sales in unit,
2020 to 2023 data.

Midea Air Conditioner Australia
Address: 7 Ordish Road Dandenong South VIC 3175 Austealia
Phone: 1300 726 002
Website: mdhome.com.au
Email: info@mdhome.com.au



MIDEA

AIR CONDITIONING TRADE PRODUCT CATALOG AUSTRALIA

2025



AIR CONDITIONER PRODUCT 2025 TRADE PRODUCT CATALOG AUSTRALIA



Midea, established in 1968 is a public company listed and since July 2016 a Fortune 500 company offering one of the most comprehensive ranges in the home appliances industry. Midea specializes in air treatment (residential and commercial solutions), refrigeration, laundry, cooking appliances, small kitchen appliances, water appliances, floor care and lighting.

Midea is My True Blue Idea

Our objective is to deliver the best home solutions for every Australia family. Our home solutions are inspired by the ideas and needs of our Australian guests. Therefore, we created the slogan “Midea is My True Blue Idea”.

MD Appliances Pty Ltd

Founded in 2018 as MD Appliances Pty Ltd, we proudly represents Midea’s air conditioning products in Australia. Our mission is to bring Midea’s world-class air conditioning solutions to the Australian market, ensuring that homes and commercial buildings alike benefit from cutting-edge technology, energy efficiency, and superior comfort.

more than \$52.8B USD of revenue in 2023	serve customers in 100+ countries	40 global production centers	190K+ employees worldwide	global Fortune 500 company
--	---	--	--	---

7 YEAR WARRANTY
For Hi-Wall/ Ducted/ Cassette/ VRF

5 YEAR WARRANTY
For Window Box A/C

2 YEAR WARRANTY
For Heavy Commercial Products

Local after sales service and support

TABLE OF CONTENTS

Single Split Systems (Wall Mounted)	03
GAIA Split Air Conditioner	04
EOS Split Air Conditioner	05
Venus Split Air Conditioner	06
Xtreme Split Air Conditioner	07
Apollo Split Air Conditioner	08
Ducted Systems	09
Middle Static Pressure	10
High Static Pressure	11
Ceiling Cassette	12-13
Multi Split Systems	14
Outdoor Units Multi Split Air Conditioner	15
Indoor Units Xtreme Series (Wall Mounted)	16
Venus Series (Wall Mounted)	16
Bulkhead	17
Mini Cassette	18
One-way Cassette	19
Window Box A/C	20
VRF Systems	21
Outdoor Units V8M Series Single Phase	22
V8M Series Three Phase	23
V8 MASTER Series (Single Unit)	24
Indoor Units Wall Mounted	25
One-Way Cassette	26
Two-way Cassette	27
Four-way Cassette	28
Compact Four-Way Cassette	29-30
Arc Duct	31
Medium Static Pressure Duct	32
High Static Pressure Duct	33-34
Small Airflow Rate Fresh Air Processing Unit	35-36
Fresh Air Processing Unit	37
VEU Series Outdoor Units	38
VEU Series Indoor Units	39
VEU Outdoor Units (for Ducted IDU)	40
VEU Ducted Indoor Units	41
Controller	42
Pool Heat Pump	43-44
M Thermal Heat Pump	45-46
Reference Projects	47-56
Notes	57-58

* Source Euromonitor International (Shanghai) Limited; Consumer Appliances 23ed, retail volume sales in unit, 2022 data



SINGLE SPLIT SYSTEMS

Wall Mounted



GAIA Split Air Conditioner

Capacity	2.6kw		3.5kW		5.0kW		7.0kW			
Market Model	MFCA26VA-W/MFCA26VA-N		MFCA35VA-W/MFCA35VA-N		MFCA50VA-W/MFCA50VA-N		MFCA70VA-W/MFCA70VA-N			
Type	Reverse Cycle		Reverse Cycle		Reverse Cycle		Reverse Cycle			
Power	220-240V,1Ph,50Hz									
Indoor unit	MFCA26VA-N		MFCA35VA-N		MFCA50VA-N		MFCA70VA-N			
Outdoor unit	MFCA26VA-W		MFCA35VA-W		MFCA50VA-W		MFCA70VA-W			
Controllers included	Infrared		Infrared		Infrared		Infrared			
Rated Capacity Cool/Heat	kW		3.55/3.60		5.2/5.2		7.0/8.05			
Max. current	A		11		17.5		17.5			
Net Weight	Indoor	kg	13.4		16.2		16.2			
	Outdoor	kg	32.6		44.5		44.5			
Product dimensions (H×W×D)	Indoor	mm	335×1000×212		336×1088×239		336×1088×239			
	Outdoor	mm	554×805×330		673×890×342		673×890×342			
Refrigerant Piping	Liquid side	mm	Ø6.35mm(1/4in)							
	Gas side	inch	Ø9.52mm(3/8in)		Ø9.52mm(3/8in)		Ø12.7mm(1/2in)		Ø12.7mm(1/2in)	
Refrigerant R32	Pre-charged	m	15							
	Quantity	kg	0.9		1.25		1.25		1.25	
Max pipe length	m		25		50		50			
Cooling	Energy rating	hot	★★★★★		★★★★☆		★★★★☆		★★★★☆	
		mix	★★★★★		★★★★☆		★★★★☆		★★★★☆	
		cold	★★★★★		★★★★☆		★★★★☆		★★★★☆	
Heating	Energy rating	hot	★★★★☆		★★★★☆		★★★★☆		★★★★☆	
		mix	★★★★☆		★★★★☆		★★★★☆		★★★★☆	
		cold	★★★★☆		★★★★☆		★★★★☆		★★★★☆	



Feature

- Refreshing Air
- Flash Cooling
- ECO Mode
- Healthy Filter
- Gear Function
- Breezeless Technology
- Smart Control
- Graphene Fin
- Turbo Mode
- Diamond Cabinet
- Do Not Disturb
- Quiet Operation
- 8°C Heating
- Humidity Control
- Follow Me
- Wide Angle Airflow
- Flash Heating
- Thermo Static Technology
- 56°C Sterilization
- 1-100% Fan Speed Control

The combination of Midea's refreshing air function, H13 HEPA filter application and 56°C sterilization functions have been rigorously reviewed and approved by the National Asthma Council Australia's Sensitive Choice Program.



EOS Split Air Conditioner

Capacity		2.6kw	3.5kW	5.0kW	7.0kW	8.0kW
Market Model		MFEP26VA-N/ MFEP26VA-W	MFEP35VA-N/ MFEP35VA-W	MFEP51VA-N/ MFEP51VA-W	MFEP70VA-N/ MFEP70VA-W	MFEP80VA-N/ MFEP80VA-W
Type		Reverse Cycle	Reverse Cycle	Reverse Cycle	Reverse Cycle	Reverse Cycle
Power		220-240V,1Ph,50Hz				
Indoor unit		MFEP26VA-N	MFEP35VA-N	MFEP51VA-N	MFEP70VA-N	MFEP80VA-N
Outdoor unit		MFEP26VA-W	MFEP35VA-W	MFEP51VA-W	MFEP70VA-W	MFEP80VA-W
Controllers included		Infrared	Infrared	Infrared	Infrared	Infrared
Rated Capacity Cool/Heat kW		2.6/2.7	3.5/3.65	5.0/5.3	7.0/8.8	8.0/9.0
Max. current A		10.5	10.5	15	17.5	17.5
Net Weight	Indoor	10.3	10.3	12.3	17.6	17.6
	Outdoor	32.2	32.2	38.4	42.4	42.4
Product dimensions (HxWxD)	Indoor	295x795x225	295x795x225	319x965x239	370x1140x275	370x1140x275
	Outdoor	554x805x330	554x805x330	673x890x342	673x890x342	673x890x342
Refrigerant Piping	Liquid side	Ø6.35mm(1/4in)				
	Gas side	Ø9.52mm(3/8in)	Ø9.52mm(3/8in)	Ø12.7mm(1/2in)	Ø15.9mm(5/8in)	Ø15.9mm(5/8in)
Refrigerant R32	Pre-charged	15				
	Quantity	0.9	0.9	1.1	1.4	1.4
Max pipe length		25	25	30	50	50
Cooling	Energy rating	hot	★★★★★	★★★★★	★★★★★	★★★★★
		mix	★★★★★	★★★★★	★★★★★	★★★★★
		cold	★★★★★	★★★★★	★★★★★	★★★★★
Heating	Energy rating	hot	★★★★★	★★★★★	★★★★★	★★★★★
		mix	★★★★★	★★★★★	★★★★★	★★★★★
		cold	★★★★★	★★★★★	★★★★★	★★★★★



Feature

- 8°C Heating
- Flash Cooling
- ECO Mode
- Healthy Filter
- Wind Avoid Me
- Smart Control
- 1-100% Fan Speed Control
- Turbo Mode
- Graphene Fin
- Thermo Static Technology
- Wide Angle Airflow
- Long Distance Windblast
- I-Clean
- Diamond Cabinet
- Do Not Disturb
- Quiet Operation
- Flash Heating



Venus Split Air Conditioner

Capacity		2.0kw	2.6kW	3.5kW	5.0kW	7.0kW	8.0kW
Market Model		MFAG20VA-N/ MFAG20VA-W	MFAG26VA-N/ MFAG26VA-W	MFAG36VA-N/ MFAG36VA-W	MFAG51VA-N/ MFAG51VA-W	MFAG70VA-N/ MFAG70VA-W	MFAG80VA-N/ MFAG80VA-W
Type		Reverse Cycle	Reverse Cycle	Reverse Cycle	Reverse Cycle	Reverse Cycle	Reverse Cycle
Power		220-240V,1Ph,50Hz					
Indoor unit		MFAG20VA-N	MFAG26VA-N	MFAG36VA-N	MFAG51VA-N	MFAG70VA-N	MFAG80VA-N
Outdoor unit		MFAG20VA-W	MFAG26VA-W	MFAG36VA-W	MFAG51VA-W	MFAG70VA-W	MFAG80VA-W
Controllers included		Infrared	Infrared	Infrared	Infrared	Infrared	Infrared
Rated Capacity Cool/Heat kW		2.0/2.25	2.6/2.7	3.55/3.8	5.0/5.52	7.0/7.5	8.0/8.5
Max. current A		9.5	9.5	10.5	15.5	17.5	17.5
Net Weight	Indoor	8.0	8.0	8.5	11.1	13.5	13.5
	Outdoor	26.5	26.5	32.2	38.3	42.4	42.4
Product dimensions (HxWxD)	Indoor	292x729x200	292x729x200	295x802x200	321x971x228	337x1082x234	337x1082x234
	Outdoor	555x765x303	555x765x303	554x805x330	673x890x342	673x890x342	673x890x342
Refrigerant Piping	Liquid side	Ø6.35mm(1/4in)					
	Gas side	Ø9.52mm(3/8in)	Ø9.52mm(3/8in)	Ø9.52mm(3/8in)	Ø12.7mm(1/2in)	Ø15.9mm(5/8in)	Ø15.9mm(5/8in)
Refrigerant R32	Pre-charged	15					
	Quantity	0.62	0.62	0.9	1.26	1.4	1.4
Max pipe length		25	25	25	30	50	50
Cooling	Energy rating	hot	★★★★★	★★★★★	★★★★★	★★★★★	★★★★★
		mix	★★★★★	★★★★★	★★★★★	★★★★★	★★★★★
		cold	★★★★★	★★★★★	★★★★★	★★★★★	★★★★★
Heating	Energy rating	hot	★★★★★	★★★★★	★★★★★	★★★★★	★★★★★
		mix	★★★★★	★★★★★	★★★★★	★★★★★	★★★★★
		cold	★★★★★	★★★★★	★★★★★	★★★★★	★★★★★



Feature

- 8°C Heating
- Auto Start
- Do Not Disturb
- Healthy Filter
- Diamond Cabinet
- Smart Control
- Wide Angle Airflow
- I Clean
- Long Distance windblast
- Graphene Fin



Xtreme Split Air Conditioner

Capacity		2.0kw	2.6kW	3.5kW	5.0kW	6.0kW	7.0kW	8.0kW	
Market Model		MFAB-20WC/MFAB-20NC	MFAB-26WC/MFAB-26NC	MFAB-35WC/MFAB-35NC	MFAB-50WC/MFAB-50NC	MFAB-60WC/MFAB-60NC	MFAB-71WC/MFAB-71NC	MFAB-81WC/MFAB-81NC	
Type		Reverse Cycle	Reverse Cycle	Reverse Cycle	Reverse Cycle	Reverse Cycle	Reverse Cycle	Reverse Cycle	
Power		220-240V,1Ph,50Hz							
Indoor unit		MFAB-20NC	MFAB-26NC	MFAB-35NC	MFAB-50NC	MFAB-60NC	MFAB-71NC	MFAB-81NC	
Outdoor unit		MFAB-20WC	MFAB-26WC	MFAB-35WC	MFAB-50WC	MFAB-60WC	MFAB-71WC	MFAB-81WC	
Controllers included		Infrared	Infrared	Infrared	Infrared	Infrared	Infrared	Infrared	
Rated Capacity Cool/Heat		kW 2.0/2.25	2.65/2.7	3.5/4.0	5.0/5.2	6.0/6.2	7.0/7.5	8.0/8.5	
Max. current		A 9.5	10.5	10.5	15.5	15.5	17.5	17.5	
Net Weight	Indoor	kg 8.0	8.5	8.5	11.1	11.1	13.5	13.5	
	Outdoor	26.5	32.2	32.2	38.3	38.3	42.4	42.4	
Product dimensions (HxWxD)	Indoor	mm 292x729x200	295x802x200	295x802x200	321x971x228	321x971x228	337x1082x234	337x1082x234	
	Outdoor	555x765x303	554x805x330	554x805x330	673x890x342	673x890x342	673x890x342	673x890x342	
Refrigerant Piping	Liquid side	mm	Ø6.35mm(1/4in)						
	Gas side	inch	Ø9.52mm(3/8in)	Ø9.52mm(3/8in)	Ø9.52mm(3/8in)	Ø12.7mm(1/2in)	Ø12.7mm(1/2in)	Ø15.9mm(5/8in)	Ø15.9mm(5/8in)
Refrigerant R32	Pre-charged	m	15						
	Quantity	kg	0.62	0.9	0.9	1.26	1.26	1.4	1.4
Max pipe length		m 25	25	25	30	30	50	50	
Cooling	Energy rating	hot	★★★★★	★★★★★	★★★★★	★★★★★	★★★★★	★★★★★	
		mix	★★★★★	★★★★★	★★★★★	★★★★★	★★★★★	★★★★★	
		cold	★★★★★	★★★★★	★★★★★	★★★★★	★★★★★	★★★★★	
Heating	Energy rating	hot	★★★★★	★★★★★	★★★★★	★★★★★	★★★★★	★★★★★	
		mix	★★★★★	★★★★★	★★★★★	★★★★★	★★★★★	★★★★★	
		cold	★★★★★	★★★★★	★★★★★	★★★★★	★★★★★	★★★★★	



Feature

- ECO Mode
- Turbo Mode
- Sleep Mode
- Timer
- Follow me
- I-Clean
- °C and °F Change
- Quiet Operation
- Horizontal Swing
- Vertical Swing
- Gear Control
- LED
- 1%-100% Fan Speed Setting
- Breeze Away
- Child Lock
- 8°C Heating



Apollo Split Air Conditioner

Capacity		2.6kw	3.5kW	5.0kW	7.0kW	9.0kW	
Market Model		MFAB26NB/MFAB26WB	MFAB35NB/MFAB35WB	MFAB50NB/MFAB50WB	MFAB70NB/MFAB70WB	MFAB90NB/MFAB90WB	
Type		Reverse Cycle	Reverse Cycle	Reverse Cycle	Reverse Cycle	Reverse Cycle	
Power		220-240V,1Ph,50Hz					
Indoor unit		MFAB26NB	MFAB35NB	MFAB50NB	MFAB70NB	MFAB90NB	
Outdoor unit		MFAB26WB	MFAB35WB	MFAB50WB	MFAB70WB	MFAB90WB	
Controllers included		Infrared	Infrared	Infrared	Infrared	Infrared	
Rated Capacity Cool/Heat		kW 2.5/3.2	3.5/4.0	5.0/6	7.1/8.0	9.0/10	
Max. current		A 9.5	10.5	15.5	17.5	19.5	
Net Weight	Indoor	kg 8.5	8.6	13.5	13.7	19.5	
	Outdoor	26.9	28.13	37.9	43.3	64.5	
Product dimensions (HxWxD)	Indoor	mm 297x802x189	297x802x189	335x1080x226	335x1080x226	362x1259x282	
	Outdoor	555x765x303	555x765x303	673x890x342	673x890x342	810x946x410	
Refrigerant Piping	Liquid side	mm	Ø6.35mm(1/4in)				
	Gas side	inch	Ø9.52mm(3/8in)	Ø12.7mm(1/2in)	Ø12.7mm(1/2in)	Ø15.9mm(5/8in)	Ø15.9mm(5/8in)
Refrigerant R32	Pre-charged	m	15				
	Quantity	kg	0.8	0.85	1.2	1.3	2.7
Max pipe length		m 25	25	30	50	50	
Cooling	Energy rating	hot	★★★★★	★★★★★	★★★★★	★★★★★	
		mix	★★★★★	★★★★★	★★★★★	★★★★★	
		cold	★★★★★	★★★★★	★★★★★	★★★★★	
Heating	Energy rating	hot	★★★★★	★★★★★	★★★★★	★★★★★	
		mix	★★★★★	★★★★★	★★★★★	★★★★★	
		cold	★★★★★	★★★★★	★★★★★	★★★★★	



Feature

- ECO Mode
- Turbo Mode
- Sleep Mode
- Timer
- Follow me
- Self-Clean
- 8°C Heating
- Quiet Operation
- Horizontal Swing
- Vertical Swing
- Gear Control
- LED
- 1%-100% Fan Speed Setting
- Breeze Away
- Child Lock

Ducted



Ducted Series Middle Static Ducted Single Phase

Capacity	7kW		9kW	
Market Model	DUCMI70IB/UCMI70OB		DUCMI90IB/UCMI90OB	
Type	Reverse Cycle		Reverse Cycle	
Power	220-240V,1Ph,50Hz			
Indoor unit	DUCMI70IB		DUCMI90IB	
Outdoor unit	UCMI70OB		UCMI90OB	
Controllers included	Wired		Wired	
Rated Capacity Cool/Heat	kW	7.3/7.4	10.5/11	
Max. current	A	16	21	
Net Weight	Indoor	kg	31.6	39.9
	Outdoor	kg	45	70.1
Product dimensions (H×W×D)	Indoor	mm	249×1100×774	249×1360×774
	Outdoor	mm	673×890×342	810×946×410
Refrigerant Piping	Liquid side	mm	Ø9.52mm(3/8in)	
	Gas side	inch	Ø15.9mm(5/8in)	
Refrigerant R32	Pre-charged	m	20	
	Quantity	kg	1.75	2.6
Max pipe length	m	50	75	

DUCTED SYSTEMS

DUCMI70IB



DUCMI90IB



UCMI70OB



(included)

UCMI90OB



Feature



4.3 In LCD Display Screen



Wireless Network



Programmable Weekly Timer



Group Control Dual Control



Error Code Display



Constant Air Volume Control



I-clean Active Clean



Fresh Air



Energy Saver



Touch Button

Ducted Series High Static Ducted Single Phase



Capacity	10kW	12.5kW	14kW	17kW
Market Model	DUCM1105IHB/UCM1105OB	DUCM1125IHB/UCM1125OB	DUCM1140IHB/UCM1140OB	DUCM1170IHB/UCM1170OB
Type	Reverse Cycle	Reverse Cycle	Reverse Cycle	Reverse Cycle
Power	220-240V, 1Ph, 50Hz			
Indoor unit	DUCM1105IHB	DUCM1125IHB	DUCM1140IHB	DUCM1170IHB
Outdoor unit	UCM1105OB	UCM1125OB	UCM1140OB	UCM1170OB
Controllers included	Wired	Wired	Wired	Wired
Rated Capacity Cool/Heat	kW 10/11	12.5/13	14/14.5	17/17.5
Max. current	A 21	31	31	31
Net Weight	Indoor	54	53.3	81.1
	Outdoor	70.1	95.1	95.1
Product dimensions (HxWxD)	Indoor	380x1200x625	380x1200x625	440x1400x858
	Outdoor	810x946x410	1333x952x415	1333x952x415
Refrigerant Piping	Liquid side	Ø9.52mm(3/8in)		
	Gas side	Ø15.9mm(5/8in)	Ø15.9mm(5/8in)	Ø19mm(3/4in)
Refrigerant R32	Pre-charged	20		
	Quantity	kg 2.6	3.6	3.6
Max pipe length	m 75			



Feature

- 4.3 In LCD Display Screen
- Wifi Control
- Programmable Weekly Timer
- Group Control Dual Control
- Error Code Display
- Touch Button
- Constant Air Volume Control
- I-clean Active Clean
- Fresh Air
- Energy Saver



(included)



CEILING CASSETTE

CASSETTE

CEILING CASSETTE Compact Ceiling Cassette

Four Way Compact Ceiling Cassette Single Phase



Capacity		7.0kW	10.5kW	12.5kW	14.0kW	
Market Model		CASMI70IB/UCMI70OB	CASMI105IB/UCMI105OB	CASMI125IB/UCMI125OB	CASMI140IB/UCMI140OB	
Type		Reverse Cycle	Reverse Cycle	Reverse Cycle	Reverse Cycle	
Power		220-240V,1Ph,50Hz				
Indoor unit		CASMI70IB	CASMI105IB	CASMI125IB	CASMI140IB	
Outdoor unit		UCMI70OBC	UCMI105OBC	UCMI125OB	UCMI140OB	
Controllers included		Infrared	Infrared	Infrared	Infrared	
Rated Capacity Cool/Heat		kW 7.2/7.7	10.5/11	12.5/13	14/14.5	
Max. current		A 16	21	31	31	
Net Weight	Indoor	kg 24.2(Body)/6(Panel)	29.3(Body)/6(Panel)	29.3(Body)/6(Panel)	29.3(Body)/6(Panel)	
	Outdoor	45	70.1	95.1	95.1	
Product dimensions (HxWxD)	Indoor	mm 245x830x830(Body)/55x950x950(Panel)	287x830x830(Body)/55x950x950(Panel)			
	Outdoor	673x890x342	810x946x410	1333x952x415		
Refrigerant Piping	Liquid side	mm	Ø9.52mm(3/8in)			
	Gas side	inch	Ø15.9mm(5/8in)			
Refrigerant R32	Pre-charged	m	20			
	Quantity	kg	1.75	3.6	3.6	3.6
Max pipe length		m	50	75	75	75



Feature

- Follow Me
- Breezeless Technology
- Anti-Cold Air Function
- Sleep Mode
- Dehumidification
- Power Down Memory
- Timer
- Flash Cooling
- Auto Start
- Refrigerant Leakage Detect
- Independent Louver
- Alarm
- Emergency Using Function
- Centralized Control Port
- Remote On/Off
- Multi Outdoor Fan Speed
- Rotation: Intelligent Dusting Switch



MULTI SPLIT SYSTEMS

Multi Split Air Conditioner



Capacity			5kW	7kW	8kW	10.5kW	13.5kW	18.0kW		
Outdoor unit			MULMI0250B	MULMI0371B	MULMI0480B	MULMI0511B	MULMI0513B	MULMI0618B		
Power			1 Phase 220-240V 50Hz							
Min-Max Indoor Units (ports)			1-2	1-3	1-4	1-5	1-5	1-6		
Rated Capacity Cool/Heat			kW	5.25/5.5	7.1/7.5	8/8.5	10.5/11	13.5/14	18.0/20.5	
Max. current			A	12	17.5	19.0	22.0	30.0	33.0	
Net Weight			Outdoor	kg	34.6	48.1	66.2	75.9	91	110.6
Product Dimensions (HxWxD)			Outdoor	mm	554x805x330	673x890x342	810x946x410	810x946x410	975x980x415	952x415x1333
Refrigerant Piping			Liquid Line	mm	2 x Ø6.35 (1/4")	3 x Ø6.35 (1/4")	4 x Ø6.35 (1/4")	5 x Ø6.35 (1/4")	5 x Ø6.35 (1/4")	6 x Ø6.35 (1/4")
			Gas Line	inch	2 x Ø9.52 (3/8")	3 x Ø9.52 (3/8")	3 x Ø9.52 (3/8") + 1 x Ø12.7 (1/2")	4 x Ø9.52 (3/8") + 1 x Ø12.7 (1/2")	3 x Ø9.52 + 2 x Ø12.7 (3 x 3/8" + 2 x 1/2")	4 x Ø9.52 + 2 x Ø12.7 (4 x 3/8" + 2 x 1/2")
Refrigerant R32			Pre-charged length for all indoors to outdoor	m	15	22.5	30	37.5	37.5	45
			Quantity	kg	1.25	1.85	2.4	2.95	3.6	3.6
Max. length for all rooms (m)				40	60	80	80	80	80	80
Max. length for one IU (m)				25	30	35	35	35	35	35
Max. height difference between IU and OU (m)						15				
Max. height difference between IUs (m)						10				



Feature



High Efficiency and Energy Saving



Optimal Comfort



Flexibility and Convenience



Great Reliability

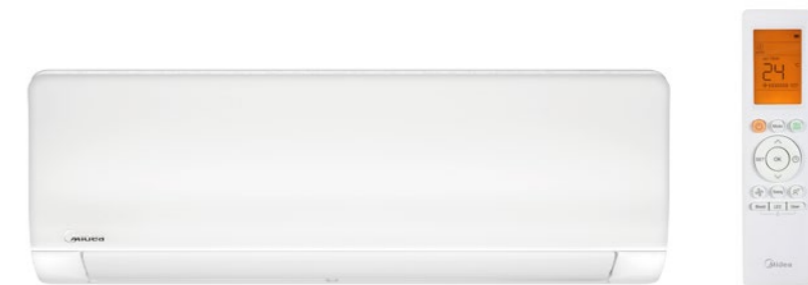


Environment Protection

Xtreme Series (Short Pipe) Wall Mounted



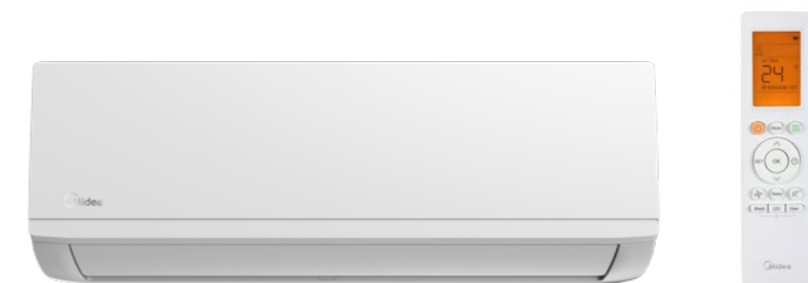
Capacity			2.0kW	2.6kW	3.5kW	5.0kW	6.0kW	7.0kW	8.0kW		
Market Model			MFXS20N	MFXS26N	MFXS35N	MFXS50N	MFXS60N	MFXS70N	MFXS80N		
Power			1-Phase, 220-240V, 50/60Hz								
Controllers included			Infrared								
Rated Capacity Cool/Heat			kW	2.0/2.25	2.65/2.7	3.5/4.0	5.0/5.2	6.0/6.2	7.0/7.5	8.0/8.5	
Net Weight			Indoor	kg	8.0	8.5	8.5	11.1	11.1	13.5	13.5
Product dimensions (HxWxD)			Indoor	mm	292x729x200	295x802x200	295x802x200	321x971x228	321x971x228	337x1082x234	337x1082x234
Refrigerant			Liquid side	mm	Ø6.35mm(1/4in)						
			Gas side	inch	Ø9.52mm(3/8in)	Ø9.52mm(3/8in)	Ø9.52mm(3/8in)	Ø12.7mm(1/2in)	Ø12.7mm(1/2in)	Ø15.9mm(5/8in)	Ø15.9mm(5/8in)



Venus Series (Long Pipe) Wall Mounted



Capacity			2.0kW	2.6kW	3.5kW	5.0kW	7.0kW	8.0kW			
Market Model			MFAG20VA-N	MFAG26VA-N	MFAG36VA-N	MFAG51VA-N	MFAG70VA-N	MFAG80VA-N			
Power			1-Phase, 220-240V, 50/60Hz								
Controllers included			Infrared								
Rated Capacity Cool/Heat			kW	2.0/2.25	2.6/2.7	3.55/3.8	5.0/5.52	7.0/7.5	8.0/8.5		
Net Weight			Indoor	kg	8.0	8.0	8.5	11.1	13.5	13.5	
Product dimensions (HxWxD)			Indoor	mm	292x729x200	292x729x200	295x802x200	321x971x228	337x1082x234	337x1082x234	
Refrigerant Piping			Liquid side	mm	Ø6.35mm(1/4in)						
			Gas side	inch	Ø9.52mm(3/8in)	Ø9.52mm(3/8in)	Ø9.52mm(3/8in)	Ø12.7mm(1/2in)	Ø15.9mm(5/8in)	Ø15.9mm(5/8in)	

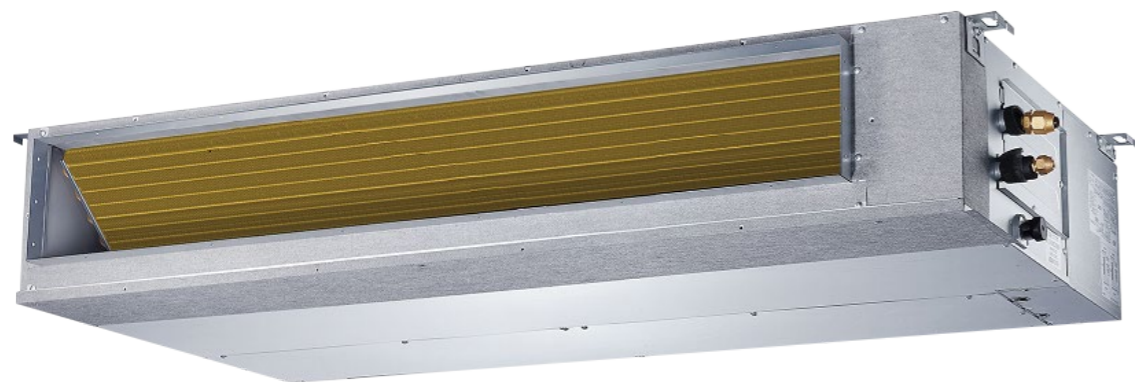


Bulkhead



Capacity			2.6kW	3.5kW	5.0kW	7.0kW
Market Model			MULMID09B	MULMID12B	MULMID18B	MULMID24B
Power			1-Phase, 220-240V, 50/60Hz			
Controllers included			Infrared	Infrared	Infrared	Infrared
Rated Capacity Cool/Heat kW			2.6/2.9	3.5/3.8	5.0/5.5	7.0/7.6
Net Weight Indoor kg			18	17.8	24.4	32.3
Product dimensions (HxWxD)			200x700x450	200x700x506	210x880x674	249x1100x774
Refrigerant Piping			Ø6.35mm(1/4in)			
Liquid side mm			Ø9.52mm(3/8in)			
Gas side inch			Ø12.7mm(1/2in)			

MULMID09B
MULMID12B
MULMID18B
MULMID24B



Mini Cassette



Capacity			2kW	2.6kW	3.5kW	5kW
Market Model			MULMIC07B	MULMIC09B	MULMIC12B	MULMIC18B
Power			1-Phase, 220-240V, 50/60Hz			
Controllers included			Infrared	Infrared	Infrared	Infrared
Rated Capacity Cool/Heat kW			2.0/2.35	2.6/2.93	3.5/4.1	5.0/5.42
Net Weight Indoor kg			14.5	14.5	16.2	16.2
Panel kg			2.5			
Product dimensions (HxWxD)			260x570x570			
Indoor mm			317x662x662			
Refrigerant Piping			Ø6.35mm(1/4in)			
Liquid side mm			Ø9.52mm(3/8in)			
Gas side inch			Ø12.7mm(1/2in)			

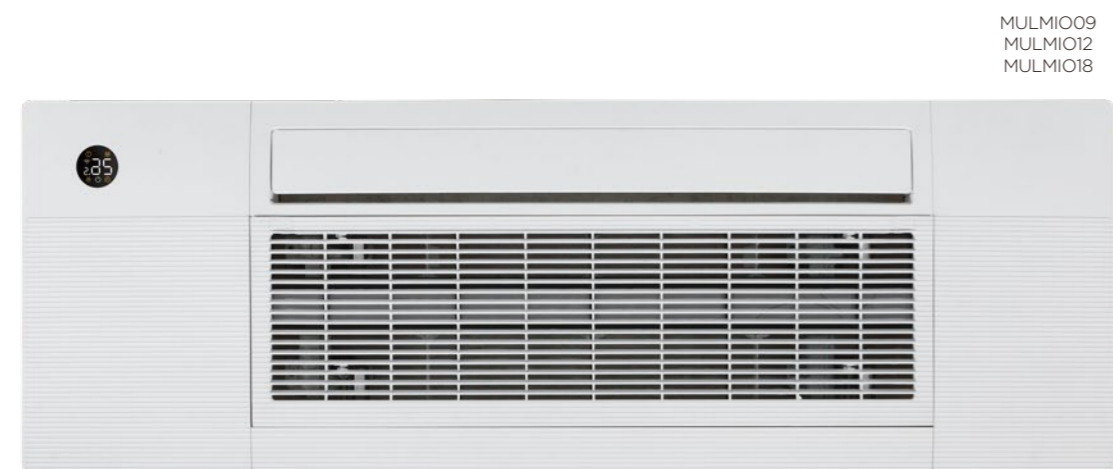
MULMIC07B
MULMIC09B
MULMIC12B
MULMIC18B



One-way Cassette



Capacity			2.6kW	3.5kW	5.0kW
Market Model			MULMIO09	MULMIO12	MULMIO18
Power			1-Phase, 220-240V, 50/60Hz		
Controllers included			Infrared	Infrared	Infrared
Rated Capacity Cool/Heat kW			2.76/2.9	3.6/3.9	5.0/5.2
Net Weight Indoor kg			20.1		
Product dimensions (HxWxD) Indoor mm			228x1278x335		
Refrigerant Piping			Liquid side mm	Ø9.52mm(3/8in)	
			Gas side inch	Ø15.9mm(5/8in)	



MULMIO09
MULMIO12
MULMIO18



Window Box A/C



Capacity			2.2kW	2.8kW	3.9kW	5.4kW
Market Model			MWFF22H	MWFF28H	MWFF39H	MWFF53H
Controllers included			Infrared			
Power			220-240V, 1Ph, 50Hz			
Cooling	Capacity	kW	2.28	2.8	3.90	5.40
	Input	W	680	845	1100	1550
	Current	A	2.99	3.71	5.20	7.00
	AEER	W/W	3.34	3.3	3.54	3.48
Heating	Capacity	kW	2.0	2.45	3.50	4.78
	Input	W	600	720	1020	1390
	Current	A	2.64	3.16	4.50	6.20
	ACOP	W/W	3.32	3.39	3.43	3.43
Rated Power Input		W	850	1080	1685	2300
Plug		A	10		15	
Rated current		A	4	5.45	8.5	11.5
Starting current		A	12	16.35	25.5	34.5
Indoor side air flow (Hi/Mi/Lo)		L/s	122/109/89	126/116/104	148/146/144	257/246/238
Indoor side sound power		dB(A)	57.1	56.1	57.1	65.1
Outdoor side sound power		dB(A)	64.3	64.2	67.3	76.2
Refrigerant type		kg	R32/0.47	R32/0.54	R32/0.83	R32/1.0
Design pressure		Mpa	1.2/4.2	1.2/4.2	1.2/4.2	1.2/4.2
Operation temp (cooling/heating)		indoor °C	17-32/0-27	17-32/0-27	17-32/0-27	17-32/0-27
		outdoor °C	18-43/-5-24	18-43/-5-24	18-43/-5-24	18-43/-5-24
Application area		m ²	10-15	13-19	18-26	24-35
Dimension(W*D*H)		mm	560x375x695	560x375x695	680x660x428	780x660x428
Packing(W*D*H)		mm	625x432x846	625x432x846	815x746x515	915x770x510
Net/Gross Weight		kg	37.4/40.7	40.6/43.9	50.4/54.2	63.1/67.2

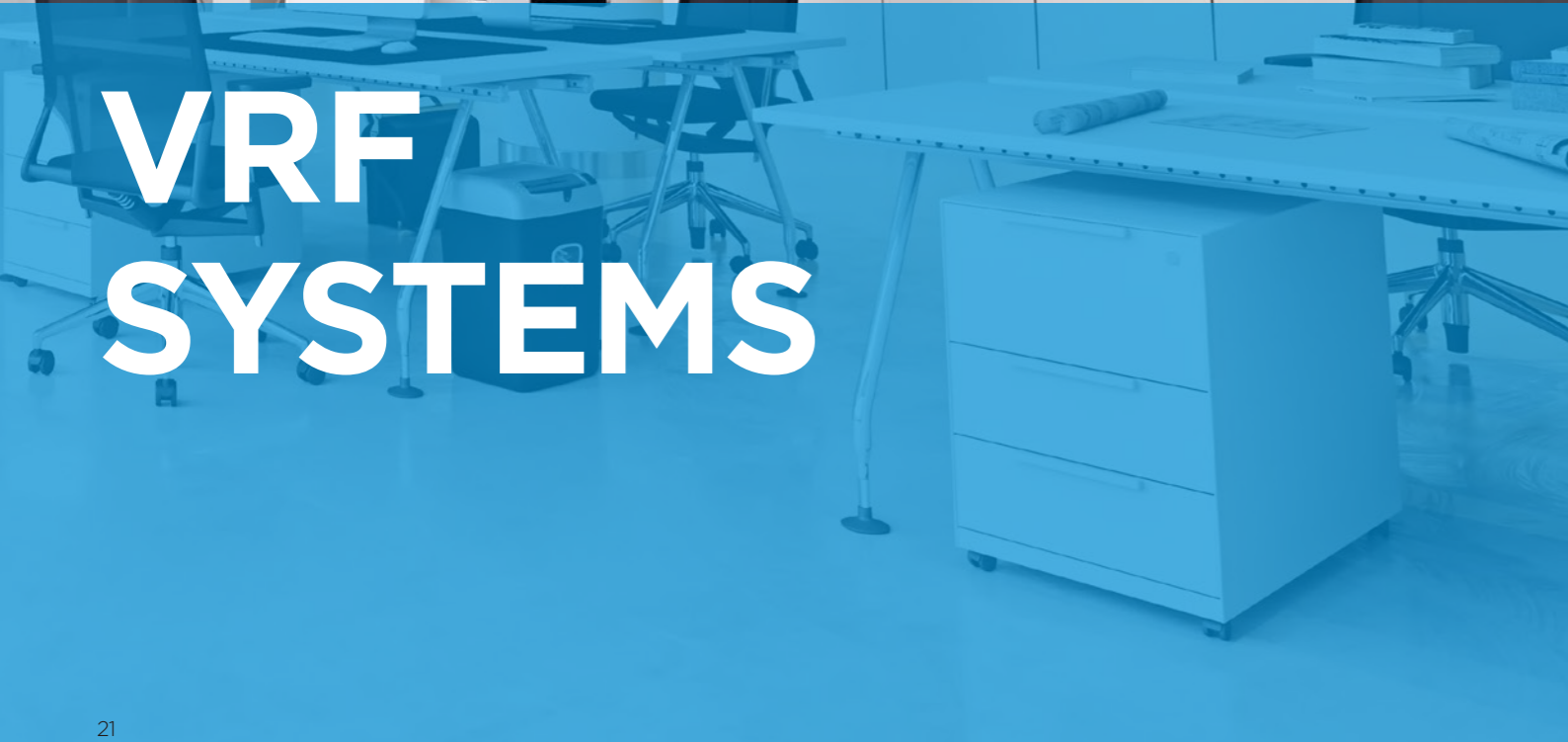


MWFF22H
MWFF28H
MWFF39H
MWFF53H



V8M Series Single Phase

Capacity	7.2kW	9.0kW	12.3kW	14.0kW	15.5kW	17.5kW
Outdoor Unit	MV8M-80WV2N8	MV8M-100WV2N8	MV8M-120WV2N8	MV8M-140WV2N8	MV8M-160WV2N8	MV8M-180WV2N8
Power	1-Phase, 220-240V, 50/60Hz					
Weight	kg	78	78	94	94	94
External dimensions (HxWxD)	mm	1040x865x410				



VRF
SYSTEMS

V8M Series Three Phase



Capacity		12.3kW	14.0kW	15.5kW	17.5kW
Outdoor Unit		MV8M-120WV2RN8	MV8M-140WV2RN8	MV8M-160WV2RN8	MV8M-180WV2RN8
Power	V/N/Hz	380-415/3/50			
Weight	kg	110			
External dimensions (H×W×D)	mm	1040×865×410			



V8 MASTER Series (Single Unit)



Capacity		8HP / 25.2kW	10HP / 28.0kW	12HP / 33.5kW	14HP / 40.0kW	16HP / 45.0kW
Outdoor Unit		MV8i-252WV2RN1E(MA)	MV8i-280WV2RN1E(MA)	MV8i-335WV2RN1E(MA)	MV8i-400WV2RN1E(MA)	MV8i-450WV2RN1E(MA)
Power		380-415/3/50				
Net Weight	kg	195	195	195	218	218
External dimensions (H×W×D)	mm	1760×940×825				

Capacity		18HP / 50.0kW	20HP / 56.0kW	22HP / 61.5kW	24HP / 67.0kW
Outdoor Unit		MV8i-500WV2RN1E(MA)	MV8i-560WV2RN1E(MA)	MV8i-615WV2RN1E(MA)	MV8i-670WV2RN1E(MA)
Power		380-415/3/50			
Net Weight	kg	277	277	297	297
External dimensions (H×W×D)	mm	1760×1340×825			

Capacity		26HP / 73.0kW	28HP / 78.5kW	30HP / 85.0kW	32HP / 90.0kW
Outdoor Unit		MV8i-730WV2RN1E(MA)	MV8i-785WV2RN1E(MA)	MV8i-850WV2RN1E(MA)	MV8i-900WV2RN1E(MA)
Power		380-415/3/50			
Net Weight	kg	373	410	410	410
External dimensions (H×W×D)	mm	1760×1880×825			



8/10/12/14/16HP
25.2/28.0/33.5/40.0/45.0kW

18/20/22/24HP
50.0/56.0/61.5/67.0kW

26/28/30/32HP
73.0/78.5/85.0/90.0kW



Wall Mounted

Model			MIH15GHN18-A	MIH22GHN18-A	MIH28GHN18-A	MIH36GHN18-A
Power			1-phase, 220-240V, 50/60Hz			
Cooling	Capacity	kW	1.5	2.2	2.8	3.6
	Power input	W	18	21	24	27
Heating	Capacity	kW	1.7	2.4	3.2	4
	Power input	W	18	21	24	27
Sound pressure level		dB(A)	32/31/30/30/ 29/28/27	33/32/31/30/ 29/28/27	35/34/33/32/ 31/30/28	37/36/34/33/ 31/30/28
Pipe connections	Liquid	mm	Ø6.35			
	Gas	mm	Ø12.7			
Net dimension(H×W×D)		mm	295×750×265			
Packing dimension(H×W×D)		mm	385×875×360			
Net/Gross weight		kg	10/12.5			
Model			MIH45GHN18-A	MIH56GHN18-A	MIH80GHN18-A	
Power			1-phase, 220-240V, 50/60Hz			
Cooling	Capacity	kW	4.5	5.6	8	
	Power input	W	30	40	65	
Heating	Capacity	kW	5	6.3	9	
	Power input	W	30	40	65	
Sound pressure level		dB(A)	37/35/33/32/ 31/30/29	41/39/37/35/ 33/31/29	45/43/41/39/ 37/35/32	
Pipe connections	Liquid	mm	Ø6.35			
	Gas	mm	Ø12.7			
Net dimension(H×W×D)		mm	295×950×265			
Packing dimension(H×W×D)		mm	385×1075×360			
Net/Gross weight		kg	11.5/14			



One-Way Cassette

Model			MIH18Q1HN18	MIH22Q1HN18	MIH28Q1HN18	
Power			1-phase, 220-240V, 50/60Hz			
Cooling	Capacity	kW	1.8	2.2	2.8	
		kBtu/h	6.1	7.5	9.6	
Power input		W	25	25	30	
Heating	Capacity	kW	2.2	2.6	3.2	
		kBtu/h	7.5	8.9	10.9	
Power input		W	25	25	30	
Airflow rate		m³/h	380/355/330/300/286/263/240	380/355/330/300/286/263/240	460/440/410/380/355/330/300	
Sound pressure level		dB(A)	30/28/27/26/25/24/22	30/28/27/26/25/24/22	37/36/35/34/32/31/30	
Indoor unit	Net dimensions (H×W×D)	mm	153×1054×428			
	Net dimensions(no water tray)(H×W×D)	mm	141×1054×428			
	Packed dimensions (H×W×D)	mm	245×1155×490			
	Net/Gross weight	kg	11.5/14.5	11.5/14.5	11.8/14.8	
Panel	Net dimensions (H×W×D)	mm	25×1180×465			
	Packed dimensions (H×W×D)	mm	107×1232×517			
	Net/Gross weight	kg	3.5/4.7			
Pipe connections	Liquid/Gas pipe	mm	Ø6.35/Ø12.7			
	Drain pipe	mm	OD Ø25			
Model			MIH36Q1HN18	MIH45Q1HN18	MIH56Q1HN18	MIH71Q1HN18
Power			1-phase, 220-240V, 50/60Hz			
Cooling	Capacity	kW	3.6	4.5	5.6	7.1
		kBtu/h	12.3	15.4	19.1	24.2
Power input		W	30	40	48	60
Heating	Capacity	kW	4.0	5.0	6.3	8.0
		kBtu/h	13.6	17.1	21.5	27.3
Power input		W	30	40	48	60
Airflow rate		m³/h	460/440/410/380/ 355/330/300	693/662/638/600/ 556/510/476	792/763/728/688/ 643/589/549	933/873/815/749/ 689/637/592
Sound pressure level		dB(A)	38/37/35/34/32/31/30	39/37/36/35/34/32/31	41/39/38/37/36/35/33	43/41/40/39/37/36/35
Indoor unit	Net dimensions (H×W×D)	mm	153×1054×428			
	Net dimensions(no water tray)(H×W×D)	mm	141×1054×428			
	Packed dimensions (H×W×D)	mm	245×1155×490			
	Net/Gross weight	kg	11.8/14.8	15.8/20.2	15.8/20.2	16.9/21.4
Panel	Net dimensions (H×W×D)	mm	25×1180×465			
	Packed dimensions (H×W×D)	mm	107×1232×517			
	Net/Gross weight	kg	3.5/4.7			
Pipe connections	Liquid/Gas pipe	mm	Ø6.35/Ø12.7			
	Drain pipe	mm	OD Ø25			

MIH18Q1HN18 MIH22Q1HN18
MIH28Q1HN18 MIH36Q1HN18



MIH45Q1HN18
MIH56Q1HN18
MIH71Q1HN18



Two-way Cassette

Model			MIH22Q2HN18	MIH28Q2HN18	MIH36Q2HN18
Power			1-phase, 220-240V, 50/60Hz		
Cooling	Capacity	kW	2.2	2.8	3.6
		kBtu/h	7.5	9.6	12.3
	Power input	W	35	40	40
Heating	Capacity	kW	2.6	3.2	4.0
		kBtu/h	8.9	10.9	13.6
	Power input	W	35	40	40
Airflow rate		m ³ /h	654/612/571/530/488/449/410	654/612/571/530/488/449/410	725/679/641/591/554/509/458
Sound pressure level		dB(A)	33/31/30/29/27/25/24	33/31/30/29/27/25/24	35/33/32/30/29/27/25
Indoor unit	Net dimension (H×W×D)		299×1172×591		
	Packed dimensions (H×W×D)		400×1355×675		
	Net/Gross weight		29.7/36.3		
Panel	Net dimension (H×W×D)		53×1430×680		
	Packed dimensions (H×W×D)		130×1525×765		
	Net/Gross weight		11/15		
Pipe connections	Liquid/Gas pipe		Ø6.35/Ø12.7		
	Drain pipe		OD Ø32		
Model			MIH45Q2HN18	MIH56Q2HN18	MIH71Q2HN18
Power			1-phase, 220-240V, 50/60Hz		
Cooling	Capacity	kW	4.5	5.6	7.1
		kBtu/h	15.4	19.1	24.2
	Power input	W	50	69	98
Heating	Capacity	kW	5.0	6.3	8.0
		kBtu/h	17.1	21.5	27.3
	Power input	W	50	69	98
Airflow rate		m ³ /h	850/792/731/670/631/592/550	980/925/855/800/755/702/670	1200/1115/1068/1000/921/808/770
Sound pressure level		dB(A)	33/31/30/29/27/25/24	33/31/30/29/27/25/24	35/33/32/30/29/27/25
Indoor unit	Net dimension (H×W×D)		299×1172×591		
	Packed dimensions (H×W×D)		400×1355×675		
	Net/Gross weight		31.6/38.2		
Panel	Net dimension (H×W×D)		53×1430×680		
	Packed dimensions (H×W×D)		130×1525×765		
	Net/Gross weight		11/15		
Pipe connections	Liquid/Gas pipe		Ø6.35/Ø12.7	Ø6.35/Ø12.7	Ø9.52/Ø15.9
	Drain pipe		OD Ø32		



Four-way Cassette

Model			MIH28Q4HN18	MIH36Q4HN18	MIH45Q4HN18	MIH56Q4HN18
Power			1-phase, 220-240V, 50/60Hz			
Cooling	Capacity	kW	2.8	3.6	4.5	5.6
		kBtu/h	9.6	12.3	15.4	19.1
	Power input	W	17.0	17.0	36	23.0
Heating	Capacity	kW	3.2	4.0	5.0	6.3
		kBtu/h	10.9	13.7	17.1	21.5
	Power input	W	17.0	17.0	36.0	23.0
Airflow rate		m ³ /h	790/740/691/641/591/542/492	790/740/691/641/591/542/492	910/840/770/701/631/561/491	840/791/741/692/642/593/543
Sound pressure level		dB(A)	30/29/28/27.5/27/26/25	30/29/28/27.5/27/26/25	37/35/34/32/30/29/27	33/32/31/30/29/28/27
Indoor unit	Net dimension (H×W×D)		204×840×840			
	Packed dimensions (H×W×D)		250×940×940			
	Net/Gross weight		18/20.5		19.5/22	
Panel	Net dimension (H×W×D)		53×950×950			
	Packed dimensions (H×W×D)		90×1020×1020			
	Net/Gross weight		5.6/7.3			
Pipe connections	Liquid/Gas pipe		Ø6.35/Ø12.7			
	Drain pipe		OD Ø25			
Model			MIH71Q4HN18	MIH80Q4HN18	MIH90Q4HN18	MIH100Q4HN18
Power			1-phase, 220-240V, 50/60Hz			
Cooling	Capacity	kW	7.1	8.0	9.0	10.0
		kBtu/h	24.2	27.3	30.7	24.1
	Power input	W	32.0	41.0	43.0	74.0
Heating	Capacity	kW	8.0	9.0	10.0	11.2
		kBtu/h	27.3	30.7	34.1	38.2
	Power input	W	32.0	41.0	43.0	74.0
Airflow rate		m ³ /h	1000/943/886/829/772/715/658	1100/1019/939/858/777/697/616	1330/1239/1148/1057/965/874/783	1470/1360/1250/1141/1031/921/811
Sound pressure level		dB(A)	37/36/34/33/31/30/28	42.5/40/38/36/34/32/30	38/37/35/34/32/31/29	43/41/40/38/36/35/33
Indoor unit	Net dimension (H×W×D)		204×840×840			
	Packed dimensions (H×W×D)		250×940×940			
	Net/Gross weight		19.5/22		21.5/24	
Panel	Net dimension (H×W×D)		53×950×950			
	Packed dimensions (H×W×D)		90×1020×1020			
	Net/Gross weight		5.6/7.3			
Pipe connections	Liquid/Gas pipe		Ø9.52/Ø15.9			
	Drain pipe		OD Ø25			



Four-way Cassette

Model			MIH112Q4HN18	MIH140Q4HN18	MIH160Q4HN18	MIH180Q4HN18
Power			1-phase, 220-240V, 50/60Hz			
Cooling	Capacity	kW	11.2	14.0	16.0	18.0
		kBtu/h	38.2	47.8	54.6	61.4
	Power input	W	61.0	118.0	110.0	145.0
Heating	Capacity	kW	12.5	16.0	18.0	20.0
		kBtu/h	42.7	54.6	61.4	68.2
	Power input	W	61.0	118.0	110.0	145.0
Airflow rate		m ³ /h	1600/1497/1393/ 1290/1186/1083/979	1900/1787/1673/ 1560/1446/1333/1219	2100/1900/1760/ 1630/1500/1380/1270	2300/2140/1960/ 1770/1600/1430/1270
Sound pressure level		dB(A)	41/40/38/37/ 36/34/33	47.5/46/44/42/ 40/38/36.5	48/46/44/43/ 41/39/37	52/49/47/45/ 42/39/38
Indoor unit	Net dimension (H×W×D)	mm	204×840×840			
	Packed dimensions (H×W×D)	mm	250×940×940			
	Net/Gross weight	kg	24/26.5		32.6/37.2	
Panel	Net dimension (H×W×D)	mm	53×950×950		55×1050×1050	
	Packed dimensions (H×W×D)	mm	90×1020×1020		100×1115×1115	
	Net/Gross weight	kg	5.6/7.3		7.4/9.7	
Pipe connections	Liquid/Gas pipe	mm	Ø9.52/Ø15.9			Ø9.52/Ø19.1
	Drain pipe	mm	OD Ø25			



Compact Four-Way Cassette

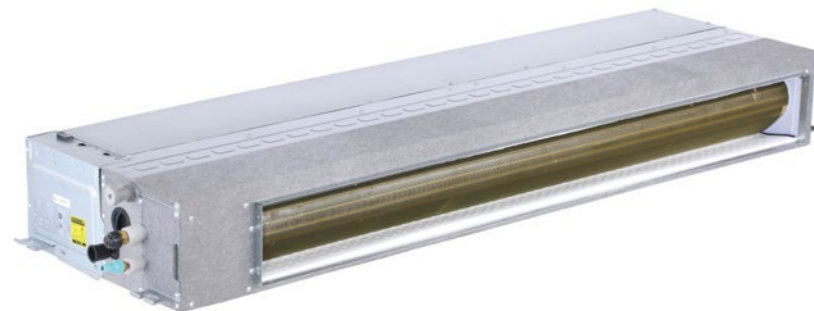
Model			MIH15Q4CHN18	MIH22Q4CHN18	MIH28Q4CHN18	
Power			1-phase, 220-240V, 50/60Hz			
Cooling	Capacity	kW	1.5	2.2	2.8	
		kBtu/h	5.1	7.5	9.6	
	Power input	W	14	14	16	
Heating	Capacity	kW	1.8	2.4	3.2	
		kBtu/h	6.1	8.2	10.9	
	Power input	W	14	14	16	
Airflow rate		m ³ /h	450/425/400/370/345/320/295	450/425/400/370/345/320/295	510/480/455/425/395/370/340	
Sound pressure level		dB(A)	29/28/27/27/26/26/25	29/28/27/27/26/26/25	30/29/28/27/26/26/25	
Sound power level		dB(A)	40/39/39/39/38/38/38	40/39/39/39/38/38/38	42/41/40/39/39/38/38	
Indoor unit	Net dimension (H×W×D)	mm	235×575×638			
	Packed dimensions (H×W×D)	mm	285×690×690			
	Net/Gross weight	kg	13.0/15.0			
Panel	Net dimension (H×W×D)	mm	65×620×620			
	Packed dimensions (H×W×D)	mm	80×680×665			
	Net/Gross weight	kg	2.3/3.0			
Pipe connections	Liquid/Gas pipe	mm	Ø6.35/Ø12.7			
	Drain pipe	mm	OD Ø25			

Model			MIH36Q4CHN18	MIH45Q4CHN18	MIH56Q4CHN18	MIH56Q4CHN18
Power			1-phase, 220-240V, 50/60Hz			
Cooling	Capacity	kW	3.6	4.5	5.6	6.3
		kBtu/h	12.3	15.4	19.1	21.5
	Power input	W	18	25	35	50
Heating	Capacity	kW	4.0	5.0	6.3	7.1
		kBtu/h	13.7	17.1	21.5	24.2
	Power input	W	18	25	35	50
Airflow rate		m ³ /h	530/500/470/440/ 405/375/345	640/605/570/530/ 495/460/425	810/765/720/670/ 625/580/535	905/855/805/755/ 705/655/605
Sound pressure level		dB(A)	31/30/29/28/27/26/25.5	36.5/35/33/31/29/28/26.5	39/38/37/36/35/34/32	43/42/40/38/36/35/33.5
Sound power level		dB(A)	42/40/39/38/38/38/38	44/44/43/42/41/41/41	48/46/45/43/42/42/41	51/50/48/46/45/44/42
Indoor unit	Net dimension (H×W×D)	mm	235×575×638			
	Packed dimensions (H×W×D)	mm	285×690×690			
	Net/Gross weight	kg	14.0/16.0		15.0/17.0	
Panel	Net dimension (H×W×D)	mm	65×620×620			
	Packed dimensions (H×W×D)	mm	80×680×665			
	Net/Gross weight	kg	2.3/3.0			
Pipe connections	Liquid/Gas pipe	mm	Ø6.35/Ø12.7			
	Drain pipe	mm	OD Ø25			



Arc Duct

Model			MIH15T3HN18	MIH22T3HN18	MIH28T3HN18	MIH36T3HN18	MIH45T3HN18
Power			1-phase, 220-240V, 50/60Hz				
Cooling	Capacity	kW	1.5	2.2	2.8	3.6	4.5
		kBtu/h	5.1	7.5	9.6	12.3	15.4
	Power input	W	21	22	28	31	43
Heating	Capacity	kW	1.8	2.5	3.2	4	5
		kBtu/h	6.1	8.5	10.9	13.7	17.1
	Power input	W	21	22	28	31	43
Airflow rate		m ³ /h	340/335/329/320/307/298/290	370/347/339/322/314/306/295	460/431/413/380/351/323/300	605/557/508/453/414/365/320	800/770/701/629/557/506/435
External static pressure		Pa	10 (10-50)				
Sound pressure level		dB(A)	27/26/25.5/24.5/23.5/22.5/22	28/27.5/26.5/25.5/24.5/23.5/22	30/29.5/28.5/27.5/26/24.5/22	30/29.5/28.5/27.5/26.5/25.5/25	33/32.5/32/30.5/29/27.5/26
Sound power level		dB(A)	43.5/43/42.5/42/41.5/41/40	46/45/44/43/42/41/40	50.5/49/47/45.5/43.5/42/40	50.5/49.5/48/47/45.5/44.5/43	52/50.5/49/47.5/46/44.5/43
Unit	Net dimension (H×W×D)	mm	199×550×450			199×700×450	199×900×450
	Packed dimensions (H×W×D)	mm	255×715×525			255×865×525	255×1065×525
	Net/Gross weight	kg	11.5/13.5			13.0/15.5	16.5/19.5
Pipe connections	Liquid/Gas pipe	mm	Ø6.35/Ø12.7				
	Drain pipe	mm	OD Ø25				
Model			MIH56T3HN18	MIH71T3HN18	MIH80T3HN18	MIH90T3HN18	MIH112T3HN18
Power			1-phase, 220-240V, 50/60Hz				
Cooling	Capacity	kW	5.6	7.1	8	9	11.2
		kBtu/h	19.1	24.2	27.3	30.7	38.2
	Power input	W	58	65	108	108	128
Heating	Capacity	kW	6.3	8	9	10	12.5
		kBtu/h	21.5	27.3	30.7	34.1	42.7
	Power input	W	58	65	108	108	128
Airflow rate		m ³ /h	900/800/761/682/603/549/470	1145/1033/957/860/763/671/580	1400/1327/1249/1175/1095/1026/960	1400/1327/1249/1175/1095/1026/960	1620/1522/1433/1343/1254/1170/1080
External static pressure		Pa	10 (10-50)			20(10-80)	
Sound pressure level		dB(A)	36/34.5/33.5/32.5/31/29/27	37/35/34/32.5/31/30/29	36.5/35.5/34/33/32/31.5/30.5	36.5/35.5/34/33/32/31.5/30.5	39.5/38/36.5/35/34/32.5/31.5
Sound power level		dB(A)	56/54/52/50/48/46/44	57/55.5/54/52/50.5/49/47	57/56/54.5/53.5/52/51/49.5	57/56/54.5/53.5/52/51/49.5	60.5/59/57.5/55.5/54/52.5/50.5
Unit	Net dimension (H×W×D)	mm	199×900×450	199×1100×450	199×1600×450		
	Packed dimensions (H×W×D)	mm	255×1065×525	255×1300×525	250×1780×525		
	Net/Gross weight	kg	16.5/19.5	20/23.5	28/32.5		
Pipe connections	Liquid/Gas pipe	mm	Ø6.35/Ø12.7		Ø5.2/Ø15.9		
	Drain pipe	mm	OD Ø25				



Medium Static Pressure Duct

Model			MIH15T2HN18	MIH22T2HN18	MIH28T2HN18	MIH36T2HN18	
Power			1-phase, 220-240V, 50/60Hz				
Cooling	Capacity	kW	1.5	2.2	2.8	3.6	
		kBtu/h	5.1	7.5	9.6	12.3	
	Power input	W	33	36	40	50	
Heating	Capacity	kW	1.8	2.5	3.2	4	
		kBtu/h	6.1	8.5	10.9	13.7	
	Power input	W	33	36	40	50	
Airflow rate		m ³ /h	470/438/407/375/343/312/280	500/467/433/400/367/333/300	540/503/467/430/393/357/320	575/535/495/455/415/375/335	
External static pressure		Pa	30 (10-160)				
Sound pressure level		dB(A)	26.5/26/25/24/23/22.5/22	26.5/26/25/24/23/22.5/22	26.5/26/25/24/23/22.5/22	29/28/27/26/25/23/22	
Unit	Net dimension (H×W×D)	mm	245×600×750				
	Packed dimensions (H×W×D)	mm	305×765×890				
	Net/Gross weight	kg	18.5/21				
Pipe connections	Liquid/Gas pipe	mm	Ø6.35/Ø12.7				
	Drain pipe	mm	OD Ø25				
Model			MIH45T2HN18	MIH56T2HN18	MIH71T2HN18	MIH80T2HN18	
Power			1-phase, 220-240V, 50/60Hz				
Cooling	Capacity	kW	4.5	5.6	7.1	8	
		kBtu/h	15.4	19.1	24.2	27.3	
	Power input	W	70	70	96	102	
Heating	Capacity	kW	5	6.3	8	9	
		kBtu/h	17.1	21.5	27.3	30.7	
	Power input	W	70	70	96	102	
Airflow rate		m ³ /h	665/623/580/538/495/453/410	970/904/838/773/707/641/575	1150/1068/986/904/822/740/660	1355/1263/1172/1080/988/897/805	
External static pressure		Pa	30 (10-160)				
Sound pressure level		dB(A)	33/32/29.5/28/26.5/25/24	33/32/31/30/27.5/26/25	35/33.5/32/30.5/29/27.5/26	37/35.5/34/32.5/31/29.5/28	
Unit	Net dimension (H×W×D)	mm	245×600×750	245×800×750	245×800×750	245×1050×750	
	Packed dimensions (H×W×D)	mm	305×765×890	305×965×890	305×965×890	305×1215×890	
	Net/Gross weight	kg	19.5/22	24/27.5	25/28.5	30/33.5	
Pipe connections	Liquid/Gas pipe	mm	Ø6.35/Ø12.7			Ø9.52/Ø15.9	
	Drain pipe	mm	OD Ø25				



Medium Static Pressure Duct

Model			MIH90T2HN18	MIH112T2HN18	MIH140T2HN18	MIH160T2HN18
Power			1-phase, 220-240V, 50/60Hz			
Cooling	Capacity	kW	9	11.2	14	16
		kBtu/h	30.7	38.2	47.8	54.6
	Power input	W	110	138	172	210
Heating	Capacity	kW	10	12.5	16	18
		kBtu/h	34.1	42.7	54.6	61.4
	Power input	W	110	138	172	210
Airflow rate		m ³ /h	1420/1323/1225/1128/ 1030/933/835	1950/1817/1683/1550/ 1417/1283/1150	2105/1971/1837/1703/ 1568/1434/1300	2350/2160/2015/1871/ 1776/1533/1400
External static pressure		Pa	40 (10-160)		50 (10-160)	
Sound pressure level		dB(A)	37/35.5/34/32.5/ 31/29.5/28	39/37/35/33/ 31/29/28	40/38/36/34/ 32/30/29	42/40/38/36/ 34/33/31
Unit	Net dimension (H×W×D)	mm	245×1050×750		245×1400×750	
	Packed dimensions (H×W×D)	mm	305×1215×890		305×1565×890	
	Net/Gross weight	kg	30/33.5	31/34.5	37/41.5	39/43.5
Pipe connections	Liquid/Gas pipe	mm	Ø9.52/Ø15.9			
	Drain pipe	mm	OD Ø25			



High Static Pressure Duct

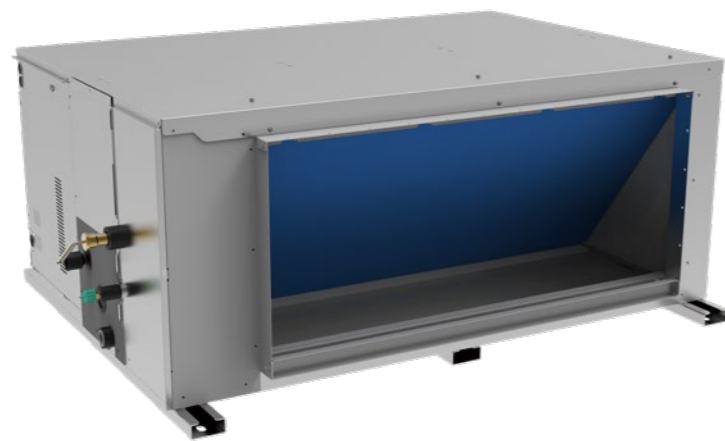
Model			MIH56T1HN18	MIH71T1HN18	MIH80T1HN18	MIH90T1HN18
Power			1-phase, 220-240V, 50/60Hz			
Cooling	Capacity	kW	5.6	7.1	8	9
		kBtu/h	19.1	24.2	27.3	30.7
	Power input	W	159	159	159	196
Heating	Capacity	kW	6.3	8	9	10
		kBtu/h	21.5	27.3	30.7	34.1
	Power input	W	159	159	159	196
Airflow rate		m ³ /h	1360/1281/1201/1122/ 1043/963/884	1360/1281/1201/1122/ 1043/963/884	1360/1281/1201/1122/ 1043/963/884	1500/1413/1325/1238/ 1150/1063/975
External static pressure		Pa	80 (0-250)			
Sound pressure level		dB(A)	39/38/36/35/33/ 32/30	39/38/36/35/ 33/32/30	39/38/36/35/ 33/32/30	40/39/37/36/ 34/33/31
Unit	Net dimension (H×W×D)	mm	299×1050×750			
	Packed dimensions (H×W×D)	mm	359×1215×890			
	Net/Gross weight	kg	35/38.5			
Pipe connections	Liquid/Gas pipe	mm	Ø6.35/Ø12.7		Ø9.52/Ø15.9	
	Drain pipe	mm	OD Ø25			

Model			MIH112T1HN18	MIH125T1HN18	MIH140T1HN18	MIH160T1HN18
Power			1-phase, 220-240V, 50/60Hz			
Cooling	Capacity	kW	11.2	12.5	14	16
		kBtu/h	38.2	42.7	47.8	54.6
	Power input	W	248	252	284	339
Heating	Capacity	kW	12.5	14	16	18
		kBtu/h	42.7	47.8	54.6	61.4
	Power input	W	248	252	284	339
Airflow rate		m ³ /h	2140/2015/1890/1766/ 1641/1516/1391	2150/2025/1899/1774/ 1649/1523/1398	2400/2260/2120/1980/ 1840/1700/1560	2600/2448/2297/2145/ 1993/1842/1690
External static pressure		Pa	80 (0-250)		100 (0-250)	
Sound pressure level		dB(A)	41/40/38/37/ 35/34/32	41/40/39/37/ 36/35/33	43/42/40/39/ 37/36/34	44/43/41/40/ 38/37/35
Unit	Net dimension (H×W×D)	mm	299×1400×750			
	Packed dimensions (H×W×D)	mm	359×1565×890			
	Net/Gross weight	kg	44.5/48.5	46.5/50.5		
Pipe connections	Liquid/Gas pipe	mm	Ø9.52/Ø15.9			
	Drain pipe	mm	OD Ø25			



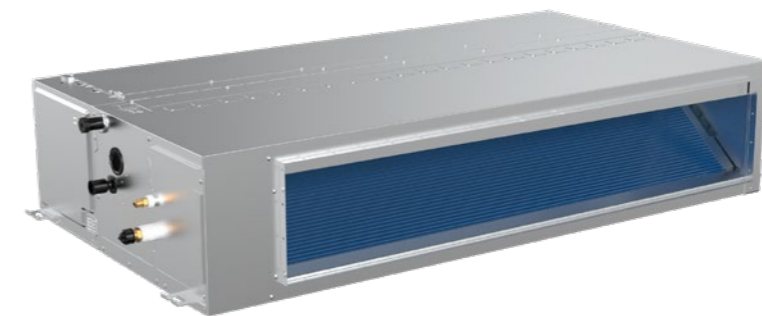
High Static Pressure Duct

Model			MIH200T1HN18	MIH224T1HN18	MIH252T1HN18	MIH280T1HN18
Power			1-phase, 220-240V, 50/60Hz			
Cooling	Capacity	kW	20	22.4	25.2	28
		kBtu/h	68.3	76.5	86.0	95.6
	Power input	W	780	780	780	780
Heating	Capacity	kW	22.5	25	26	31.5
		kBtu/h	76.8	85.3	88.7	107.5
	Power input	W	780	780	780	780
Airflow rate		m ³ /h	4700/4387/4073/3760/ 3447/3133/2820	4700/4387/4073/3760/ 3447/3133/2820	4700/4387/4073/3760/ 3447/3133/2820	4700/4387/4073/3760/ 3447/3133/2820
External static pressure		Pa	200(0-400)			
Sound pressure level		dB(A)	51/50/48/46/ 44/43/42	51/50/48/46/ 44/43/42	51/50/48/46/ 44/43/42	51/50/48/46/ 44/43/42
Unit	Net dimension (H×W×D)	mm	580×1300×900			
	Packed dimensions (H×W×D)	mm	730×1530×1060			
	Net/Gross weight	kg	125/150			
Pipe connections	Liquid/Gas pipe	mm	Ø9.52/Ø19.1		Ø12.7/Ø22.2	
	Drain pipe	mm	OD Ø32			
Model			MIH335T1HN18	MIH400T1HN18	MIH450T1HN18	MIH560T1HN18
Power			1-phase, 220-240V, 50/60Hz			
Cooling	Capacity	kW	33.5	40	45	56
		kBtu/h	114.3	136.5	153.6	191.1
	Power input	W	810	1850	1850	2030
Heating	Capacity	kW	38	45	56	63
		kBtu/h	129.7	153.6	191.1	215.0
	Power input	W	810	1850	1850	2030
Airflow rate		m ³ /h	4700/4387/4073/3760/ 3447/3133/2820	7500/7000/6500/6000/ 5500/5000/4500	7500/7000/6500/6000/ 5500/5000/4500	8400/7840/7280/6720/ 6160/5600/5040
External static pressure		Pa	200(0-400)		300(0-400)	
Sound pressure level		dB(A)	52/51/49/48/ 46/44/43	58/56/54/52/ 50/49/48	58/56/54/52/ 50/49/48	59/58/56/54/ 53/51/49
Unit	Net dimension (H×W×D)	mm	580×1300×900		580×1850×900	
	Packed dimensions (H×W×D)	mm	725×1530×1060		730×2080×1060	
	Net/Gross weight	kg	128/153	166/204	166/204	170/208
Pipe connections	Liquid/Gas pipe	mm	Ø12.7/Ø25.4		Ø15.9/Ø28.6	
	Drain pipe	mm	OD Ø32			



Small Airflow Rate Fresh Air Processing Unit

Model			MIH90FASHN18	MIH140FASHN18	MIH160FASHN18
Power			1-phase, 220-240V, 50/60Hz		
Cooling	Capacity	kW	9	14	16
		kBtu/h	30.7	47.8	54.6
	Power input	W	128	184	210
Heating	Capacity	kW	5.7	8.9	10.1
		kBtu/h	19.5	30.4	34.5
	Power input	W	128	184	210
Airflow rate		m ³ /h	690/635/580/525/470/415/360	1080/990/900/810/720/630/540	1230/1130/1030/930/830/730/630
External static pressure		Pa	100 (0-250)		
Sound pressure level		dB(A)	38/36.5/35/33.5/32/30.5/29	42/40/38/36/34/32/30	43/41/39/37/35/33/31
Unit	Net dimension (H×W×D)	mm	299×1135×770		
	Packed dimensions (H×W×D)	mm	359×1215×890		
	Net/Gross weight	kg	34.5/38		
Pipe connections	Liquid/Gas pipe	mm	Ø9.52/Ø15.9		
	Drain pipe	mm	OD Ø25		
Model			MIH224FASHN18	MIH280FASHN18	
Power			1-phase, 220-240V, 50/60Hz		
Cooling	Capacity	kW	22.4	28	
		kBtu/h	76.5	95.6	
	Power input	W	252	284	
Heating	Capacity	kW	13.9	17.4	
		kBtu/h	47.4	59.4	
	Power input	W	252	284	
Airflow rate		m ³ /h	1680/1540/1400/1260/1120/980/840	2100/1930/1760/1590/1420/1250/1080	
External static pressure		Pa	100 (0-250)		
Sound pressure level		dB(A)	46/44/42/40/38/36/34	48/46/44/42/40/38/36	
Unit	Net dimension (H×W×D)	mm	299×1485×770		
	Packed dimensions (H×W×D)	mm	359×1565×890		
	Net/Gross weight	kg	46/50		
Pipe connections	Liquid/Gas pipe	mm	Ø9.52/Ø19.1		
	Drain pipe	mm	OD Ø25		



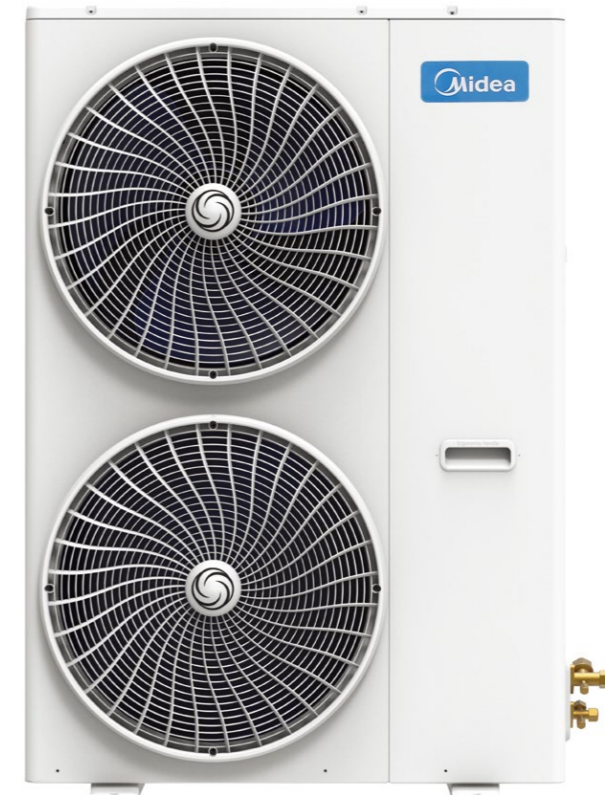
Fresh Air Processing Unit

Model			MIH224FAHN18	MIH252FAHN18	MIH280FAHN18	MIH335FAHN18
Power			1-phase, 220-240V, 50/60Hz			
Cooling	Capacity	kW	22.4	25.2	28	33.5
		kBtu/h	76.5	86.0	95.6	114.3
	Power input	W	680	680	680	710
Heating	Capacity	kW	18	20	22	27
		kBtu/h	61.4	68.3	75.1	92.2
	Power input	W	680	680	680	710
Airflow rate		m ³ /h	3000/2800/2600/2400/ 2200/2000/1800	3000/2800/2600/2400/ 2200/2000/1800	3000/2800/2600/2400/ 2200/2000/1800	3000/2800/2600/2400/ 2200/2000/1800
External static pressure		Pa	200(0-400)			
Sound pressure level		dB(A)	50/49/48/47/ 46/44/43	50/49/48/47/ 46/44/43	50/49/48/47/ 46/44/43	52/51/50/49/ 48/46/44
Unit	Net dimension (H×W×D)	mm	580×1310×1050			
	Packed dimensions (H×W×D)	mm	725×1530×1060			
	Net/Gross weight	kg	132/148	132/148	132/148	135/151
Pipe connections	Liquid/Gas pipe	mm	Ø9.52/Ø22.2			
	Drain pipe	mm	OD Ø32			
Model			MIH400FAHN18	MIH450FAHN18	MIH560FAHN18	
Power			1-phase, 220-240V, 50/60Hz			
Cooling	Capacity	kW	40	45	56	
		kBtu/h	136.5	153.6	191.1	
	Power input	W	1170	1170	1760	
Heating	Capacity	kW	32	36	45	
		kBtu/h	109.2	122.9	153.6	
	Power input	W	1170	1170	1760	
Airflow rate		m ³ /h	4200/3900/3600/3300/ 3000/700/2400	4200/3900/3600/3300/ 3000/700/2400	6000/5600/5200/4800/ 4400/4000/3600	
External static pressure		Pa	300(0-400)			
Sound pressure level		dB(A)	58/56/55/53/51/49/48	58/56/55/53/51/49/48	59/57/56/55/53/51/50	
Unit	Net dimension (H×W×D)	mm	580×1860×1050			
	Packed dimensions (H×W×D)	mm	725×2080×1060			
	Net/Gross weight	kg	175/195	175/195	180/200	
Pipe connections	Liquid/Gas pipe	mm	Ø15.9/Ø28.6			
	Drain pipe	mm	OD Ø32			



VEU Series Outdoor Units

Model			MDV-V200WN1(AU)
Power			1-phase, 220-240V, 50/60Hz
Cooling	Capacity	kW	15.5
	Power input	kW	4.0
Heating	Capacity	kW	21.0
	Power input	kW	5.0
Connected indoor unit	Total capacity		60-130% of outdoor unit capacity
	Maximum quantity		12
Ambient temp. operation range	Cooling	°C	-15-55
	Heating	°C	-20-27
Sound pressure level(cooling/heating)		dB(A)	59/59
Refrigerant	Type		R410A
	Charge	Kg	4.4
pipe size	Liquid	mm	9
	Gas	mm	19
	Max. height difference	m	30(ODU up)
	Max. piping length	m	20(ODU down)
Net dimension(H×W×D)		mm	1327×902×320
Packing dimension(H×W×D)		mm	1406×1082×434
Net/Gross weight		kg	103/111



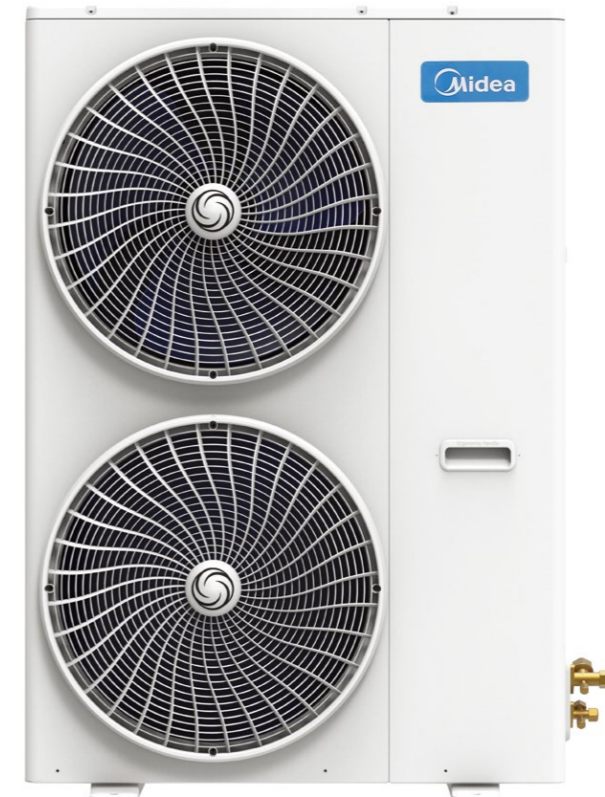
VEU Series Indoor Units

Model			MIH15GHN18-A	MIH22GHN18-A	MIH28GHN18-A	MIH36GHN18-A
Power			1-phase, 220-240V, 50/60Hz			
Cooling	Capacity	kW	1.5	2.2	2.8	3.6
	Power input	W	18	21	24	27
Heating	Capacity	kW	1.7	2.4	3.2	4
	Power input	W	18	21	24	27
Sound pressure level		dB(A)	32/31/30/30/ 29/28/27	33/32/31/30/ 29/28/27	35/34/33/32/ 31/30/28	37/36/34/33/ 31/30/28
Pipe connections	Liquid	mm	Ø6.35			
	Gas	mm	Ø12.7			
Net dimension(H×W×D)		mm	295×750×265			
Packing dimension(H×W×D)		mm	385×875×360			
Net/Gross weight		kg	10/12.5			
Model			MIH45GHN18-A	MIH56GHN18-A	MIH80GHN18-A	
Power			1-phase, 220-240V, 50/60Hz			
Cooling	Capacity	kW	4.5	5.6	8	
	Power input	W	30	40	65	
Heating	Capacity	kW	5	6.3	9	
	Power input	W	30	40	65	
Sound pressure level		dB(A)	37/35/33/32/ 31/30/29	41/39/37/35/ 33/31/29	45/43/41/39/ 37/35/32	
Pipe connections	Liquid	mm	Ø6.35			
	Gas	mm	Ø12.7			
Net dimension(H×W×D)		mm	295×950×265			
Packing dimension(H×W×D)		mm	385×1075×360			
Net/Gross weight		kg	11.5/14			
			15/18			



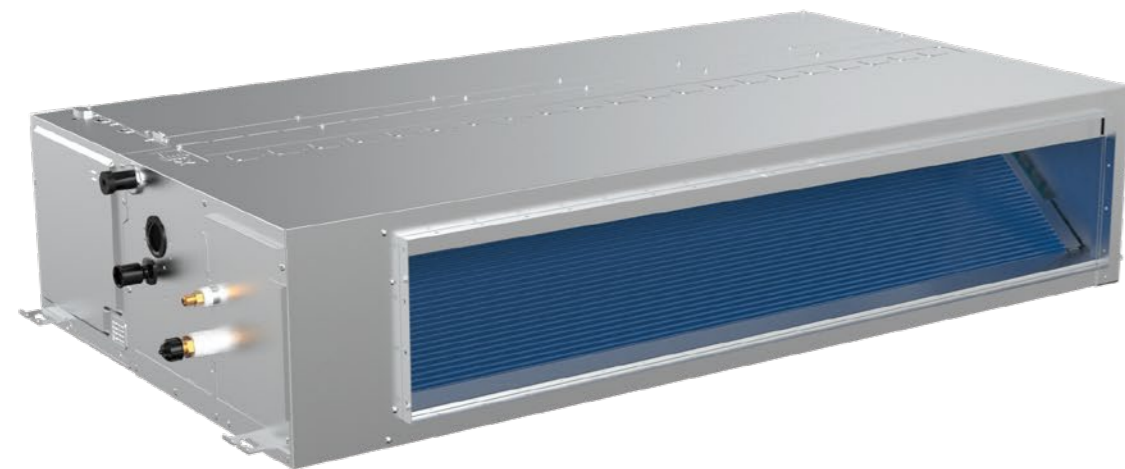
VEU Outdoor Units (for Ducted IDU)











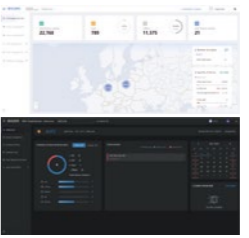
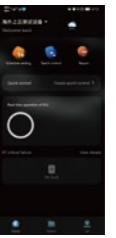
Model			MDV-V230WN1(AU)
Power			1-phase, 220-240V, 50/60Hz
Cooling	Capacity	kW	23.0
	Power input	kW	5.28
Heating	Capacity	kW	19.5
	Power input	kW	5.6
Connected indoor unit	Total capacity		60-130% of outdoor unit capacity
	Maximum quantity		12
Ambient temp. operation range	Cooling	°C	-15-55
	Heating	°C	-20-27
Sound pressure level(cooling/heating)		dB(A)	59/59
Refrigerant	Type		R410A
	Charge	Kg	4.4
pipe size	Liquid	mm	9
	Gas	mm	19
	Max. height difference	m	30(ODU up)
	Max. piping length	m	20(ODU down)
Net dimension(H×W×D)		mm	902×1327×320
Packing dimension(H×W×D)		mm	1082×1406×434
Net/Gross weight		kg	103/111



VEU Ducted Indoor Units

Model			MIH180TIHN18(S)	MIH200TIHN18(S)	MIH224TIHN18(S)	MIH252TIHN18(S)	MIH280TIHN18(S)
Power			1-phase, 220-240V, 50/60Hz				
Cooling	Capacity	kW	18	20	22.4	25.2	28
Heating	Capacity	kW	20	23.5	25	26	31.5
Airflow rate	m ³ /h		4100/3872/3644/3416 /3189/2961/2733	4250/4014/3778/3542 /3306/3070/2833	4400/4156/3911/3667 /3422/3178/2933	4800/4533/4267/4000 /3733/3467/3200	5200/4911/4622/4333 /4044/3756/3467
External static pressure	Pa		150(50-280)				
Sound pressure level	dB(A)		47	47.5	49	50	51
Unit	Net dimensions (W×H×D)	mm	1300x477x915				
	Packed dimensions (W×H×D)	mm	1500x640x1070				
	Net/Gross weight	kg	79.5/109	79.5/109	82/111.5	82/111.5	82/111.5
Pipe connections	Liquid/Gas pipe	mm	Ø9.52/Ø19	Ø9.52/Ø19	Ø9.52/Ø19	Ø12.7/Ø22	Ø12.7/Ø22
	Drain pipe	mm	OD Ø32				



Controller Options	
Wireless Controllers	 <p>RM12F1</p>
Wired Controllers	 <p>WDC3-86S</p>  <p>WDC3-86T (Build in Wifi)</p>  <p>WDC3-120T (Build in Wifi)</p>
Central Controller	 <p>TC3-10.1</p>
BMS Gateways	 <p>GW3-BAC</p>  <p>GW3-LON</p>  <p>GW3-MOD</p>  <p>GW3-KNX</p>
Internet Control	 <p>GW3-Cloud</p>  <p>Central controller App</p>  <p>Mobile App</p>

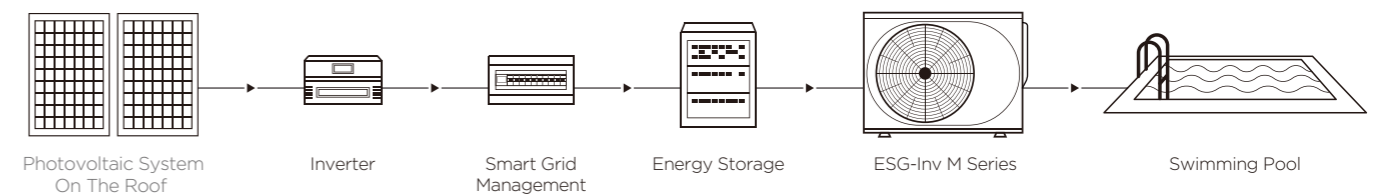


Pool Heat Pump

Capacity	7.16kW	9.15kW	12.5kW	16kW	18.8kW
Model	MSC-70D2N8-A	MSC-90D2N8-A	MSC-120D2N8-A	MSC-160D2N8-A	MSC-200D2N8-A
Power	220-240V- 50Hz	220-240V- 50Hz	220-240V- 50Hz	220-240V- 50Hz	220-240V- 50Hz
External dimensions (H×W×D) mm	712×988×365	712×988×365	712×988×365	712×988×365	712×988×365
Refrigerant charge	R32	R32	R32	R32	R32
Water outlet temperature °C			10 to 40		
Outdoor operating temperature °C			-7 to 43		



POOL HEAT PUMP



M Thermal Heat Pump (Single Phase)



Model			MHCV8WD2N7-B	MHCV10WD2N7-B	MHCV12WD2N7-B	MHCV12WD2N7-B	MHCV16WD2N7-B
Power			1-phase, 220-240V, 50/60Hz				
Heating A7W35	Capacity	W	8000	9500	12100	14000	15500
	Rated input	W	1524	1919	2444	2979	3444
	COP		5.25	4.95	4.95	4.70	4.50
Heating A7W45	Capacity	W	8100	9500	12300	14000	15500
	Rated input	W	2025	2436	3154	3760	4247
	COP		4.00	3.90	3.90	3.75	3.65
Heating A7W55	Capacity	W	8100	9500	11900	13800	16000
	Rated input	W	2388	2969	3662	4381	5246
	COP		3.35	3.20	3.25	3.15	3.05
SCOP	Average climate, W35°C		A+++				
			5.35	5.33	4.94	4.76	4.72
SEER	Average climate, W7°C		A+++				
			4.06	4.01	3.96	3.85	3.86
SEER	Average climate, W7°C		5.61	5.53	4.99	4.97	4.98
	Average climate, W18°C		7.63	7.67	7.03	6.94	6.87
ErP sound power level	dB		53	54	55	57	59
Sound pressure (1m)	Heating A7W35	dB(A)	40	41	43	46	49
	Heating A35W18	dB(A)	39	41	42	43	44
Refrigerant	Type (GWP)		R290 (3)				
	Charged volume	g	1100		1500		
Unit dimensions (H×W×D)	mm	1051×1330×475					
Unit dimensions (H×W×D)	mm	1235×1390×570					
Net/Gross weight	kg	148/170		169/191			
Water side connection			G1 1/4" BSP				
Outdoor air temperature range	Cooling	°C	-5 - 46				
	Heating	°C	-25 - 35				
	DHW	°C	-25 - 46				
Water setting temperature range	Cooling	°C	5 - 25				
	Heating	°C	25 - 80				
	DHW	°C	20 - 70				



M Thermal Heat Pump (Three Phase)



Model			MHCV8WD2RN7-B	MHCV10WD2RN7-B	MHCV12WD2RN7-B	MHCV14WD2RN7-B	MHCV16WD2RN7-B
Power			3-phase, 380-415V, 50/60Hz				
Heating A7W35	Capacity	W	8000	9500	12100	14000	15500
	Rated input	W	1524	1919	2444	2979	3444
	COP		5.25	4.95	4.95	4.70	4.50
Heating A7W45	Capacity	W	8100	9500	12300	14100	15500
	Rated input	W	2025	2436	3154	3760	4247
	COP		4.00	3.90	3.90	3.75	3.65
Heating A7W55	Capacity	W	8000	9500	11900	13800	16000
	Rated input	W	2388	2969	3662	4381	5246
	COP		3.35	3.20	3.25	3.15	3.05
SCOP	Average climate, W35°C		A+++				
			5.35	5.33	4.94	4.76	4.72
SEER	Average climate, W7°C		A+++				
			4.06	4.01	3.96	3.85	3.86
SEER	Average climate, W7°C		5.61	5.53	4.99	4.97	4.98
	Average climate, W18°C		7.63	7.67	7.03	6.94	6.87
ErP sound power level	dB		53	54	55	57	59
Sound pressure (1m)	Heating A7W35	dB(A)	40	41	43	46	49
	Heating A35W18	dB(A)	39	41	42	43	44
Refrigerant	Type (GWP)		R290 (3)				
	Charged volume	g	1100		1500		
Unit dimensions (H×W×D)	mm	1051×1330×475					
Unit dimensions (H×W×D)	mm	1235×1390×570					
Net/Gross weight	kg	148/170		169/191			
Water side connection			G1 1/4" BSP				
Outdoor air temperature range	Cooling	°C	-5 - 46				
	Heating	°C	-25 - 35				
	DHW	°C	-25 - 46				
Water setting temperature range	Cooling	°C	5 - 25				
	Heating	°C	25 - 80				
	DHW	°C	20 - 70				





REFERENCE PROJECTS

2018 World Cup Stadiums Luzhniki Stadium(Final Match)

📍 City: Moscow

📦 Products: VRF V5X



As the last of tendering processes wrapped up and the final announcement was made, Midea Commercial Air Conditioner became the biggest winner by supplying HVAC solutions for 7 out of 12 official stadiums. This is the second time that Midea as HVAC solution provider enters World Cup projects, the first time was in Brazil in 2014. The solutions provided at these venues will come as a combination of VRF, Water-cooled screw chillers and Fan coil units.

2016 Rio Games Stadiums

🌍 Country: Brazil

📍 City: Rio de Janeiro

📦 Outdoor Units: V5 X series VRF, VRF (Midea)/Chiller (Midea-Carrier)



In a prime showing of global prowess, Midea-Carrier JV has announced its winning sweep of the 142 competitions to supply climate control solutions to Brazil's new sporting stadiums in Barra and Deodoro Olympic Parks. Midea Carrier ABC JV won all the new venues in Barra Zone and Deodoro Olympic Parks. The solutions provided at these venues will come as a combination of VRF products and large tonnage chiller units.

2014 FIFA World Cup Brazil Beira Rio Stadium

📍 Country: Brazil

📍 City: Porto Alegre

📦 Outdoor Units: 3-pipe heat recovery VRF

📦 Indoor Units: Duct & Cassette type

🕒 Total Capacity: 1,016HP



Riverbank Stadium, the biggest one in the south of Brazil, held six group matches and two elimination matches in the 2014 World Cup. The air conditioning equipment has to adjust to the different operating and time requirements of each zone in the stadium. In addition, flexible control is needed to avoid energy waste for the large cooling load, short-term dense population and high mobility in the stadium. Midea has helped a lot in Beira Rio's winning of LEED silver certification by providing high efficiency heat recovery VRF system to the venue. V4 plus R series VRF, features top cooling and heating effect. It can achieve simultaneous cooling and heating which greatly reduces the energy consumption and help cut the running cost. Besides, it is friendlier to the environment as it emits less carbon dioxide and makes the place more cozy and comfortable for the fanatic fans. In Brazil, less than 1% of the buildings have certification of sustainability, not to say the higher level of certification LEED Silver. And the obtaining of LEED silver certification further demonstrates the excellent quality of Midea air conditioning equipment that applied in Beira Rio Stadium.

Singapore Changi Airport

📍 Country: Singapore

📍 City: Changi

📦 Outdoor Units: VRF, water-cooled packaged units

📦 Indoor Units: Duct & Cassette

🕒 Total Capacity: 2,084kW



Singapore Changi International Airport is a member of the Star Alliance and the main airline hub of Singapore airlines. It has always been the No.1 airport in the world for the past three years, and the No.1 Terminal has been in operation for 35 years. MBT provided VRF and water-cooled packaged units in the renovated project.

Hilton Barcelona Maria Cristina(Five Star)

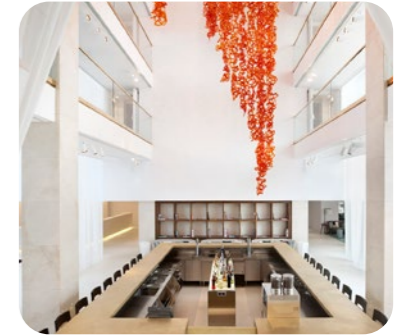
📍 Country: Spain

📍 City: Barcelona

📦 Outdoor Units: 3-pipe heat recovery VRF

📦 Indoor Units: Duct & Cassette

🕒 Total Capacity: 1,200HP



SANA Residence - SANA Berlin Hotel

📍 Country: Germany

📍 City: Berlin

📦 Outdoor Units: V4+ Series VRF

📦 Indoor Units: Duct



Atlantis Hotel(Five Star)

- 📍 Country: UAE
- 📍 City: Dubai
- 📦 Products: FCU & AHU



Harvey Nichols Edinburgh

- 📍 Country: UK
- 📍 City: Edinburgh
- 📦 Outdoor Units: Air-cooled modular chiller
- 📦 Indoor Units: FCU
- 📊 Total Capacity: 255HP



Dalma Mall

- 📍 Country: UAE
- 📍 City: Abu Dhabi
- 📦 Outdoor Units: Centrifugal chiller
- 📊 Total Capacity: 10,000RT
- 📅 Completion Year: 2014



Dalma Mall is the largest shopping mall in Abu Dhabi. MBT put forward the new design 5*2000 RT by applying hero product—super high efficiency falling film centrifugal chiller in the renovated project. We also provided refrigerant leak detection and management system according to requirement.

Parasol Sevilla

- 📍 Country: Spain
- 📍 City: Sevilla
- 📦 Outdoor Units: V4+I series VRF
- 📦 Indoor Units: Duct & Cassette



Vulcano Buono

- 🌐 Country: Italy
- 📍 City: Nola, Napoli
- 📦 Product: Water loop heat pump, rooftop packaged units



After careful analysis, the Vulcano Buono air-conditioning system was entirely entrusted to Water Loop Heat Pump by Clivet. Only the Auchan supermarket has an independent system, for technical uniformity with the other structures in the group and due to the availability of a single roof. The sales area uses nine rooftop air-to-air heat pumps. Due to the particular conditions required, the food laboratories are served by air-conditioning units powered by two Spinchiller refrigerators, one of which is the Brine version, which supplies ice-cold water at 3°C. Thanks to the Clivet WLHP system, each individual setting automatically sets and maintains its own ideal climate year round, independently of its own position, size or intended use. In terms of the initial investment costs, the greater construction simplicity of the heat pumps and the parceling out of their purchase to the individual shop owners resulted as a winning strategy. As these machines are adapted to internal installation, no units can be seen on the Vulcano Buono slopes which are covered by three hundred and fifty thousand plants.

University of Bergen

- 🌐 Country: Norway
- 📍 City: Bergen
- 📦 Product: Air-cooled heat pump



Sykehuset Innlandet Hospital

- 🌐 Country: Norway
- 📍 City: Hamar
- 📦 Product: Indoor condenserless chillers



CHASE Apartments (251 Canterbury Road, Forest Hill, Vic 3131)

- 🌐 Country: Australia
- 📍 City: Melbourne
- 📦 Product: Residential Air Conditioner Single Split



117 Khyber Pass Road Office Building

- 📍 Country: New Zealand
- 📍 City: Auckland
- 📦 Product: Air-cooled modular chiller



Free Serbian Orthodox Church (243/247 Vulture St, South Brisbane QLD 4101)

- 📍 Country: Australia
- 📍 City: Brisbane
- 📦 Product: Residential Air Conditioner Single Split



Supercheap Auto Sunshine (484 Ballarat Rd, Sunshine VIC 3020)

- 📍 Country: Australia
- 📍 City: Melbourne
- 📦 Product: Cassette Air Conditioner



Malvern East Apartment Project (616 - 618 Warrigal Road , Malvern East VIC)

- 📍 Country: Australia
- 📍 City: Melbourne
- 📦 Product: Residential Air Conditioner Single Split



